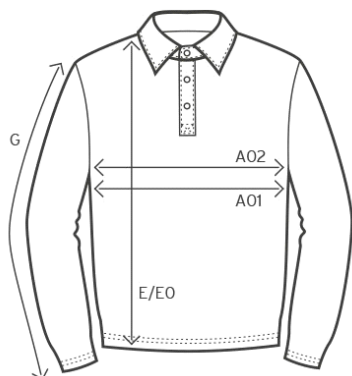


4605 / 4605F

Women's Heavy Polo Longsleeve



measurement table (cm)

| | XS | S | M | L | XL | XXL |
|-----|----|----|----|----|----|-----|
| A02 | 40 | 43 | 46 | 49 | 53 | 56 |
| E | 59 | 62 | 65 | 68 | 71 | 73 |
| G | 60 | 61 | 62 | 62 | 62 | 62 |

A02 1/2 CHEST

E BODY LENGTH

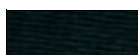
G SLEEVE LENGTH

colours



00/white

11-0601 TPX/TCX



9D/black

19-4205 TPX/TCX



36/fire red

19-1663 TPX/TCX



54/navy

19-4025 TPX/TCX



product

4605 / 4605F

Women's Heavy Polo
Longsleeve

material

100 % cotton

weight

220 g/m²

sizes

XS-XXL

care instructions



packaging units

Unit = 5 pieces.

Carton = 50 pieces.

Sizes and weights + /- 5%. Subject to amendment.



4605 / 4605F

Women's Heavy Polo Longsleeve

product description

Longsleeve polo, high-quality finished button panel with 3 tone-in-tone buttons, side slits, piqué, 100 % cotton, 220 g/m², XS–XXL.

short description

Timeless longsleeve piqué polo with high-quality finished button panel and 3 tone-in-tone buttons as well as side slits, produced of combed cotton. The polo has a modern cut.

properties

- outstanding washing results at 60° C as well as suitable for tumble drying
- customizable with Do your own Placket

Sizes and weights + /- 5%. Subject to amendment.

